

From disconnected elements to a harmonious ecosystem

The Epiverse-TRACE project

Hugo Gruson

Lead Software Architect, data.org

 @bisaloo

Scientific research relies more and more on data science



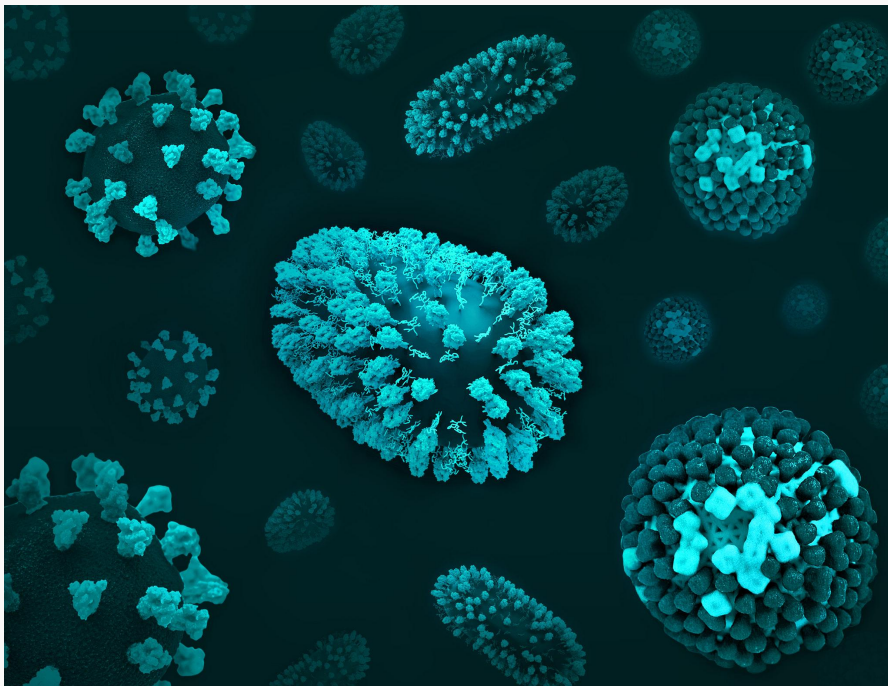
Modern data science pipelines are not made of fully interoperable pieces.



Piping system on a chemical tanker, by Hervé Cozanet, CC BY-SA

We cannot afford to fix and update pipelines in the middle of a crisis

COVID-19, RSV, and Flu, by the NIAID, CC BY

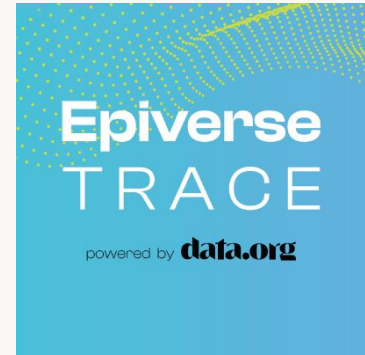


Sailors practice fixing a broken pipe during a damage control training environment, by the US Navy, CC BY

**We don't just need good isolated
pieces of software, we need a robust
ecosystem as a whole.**

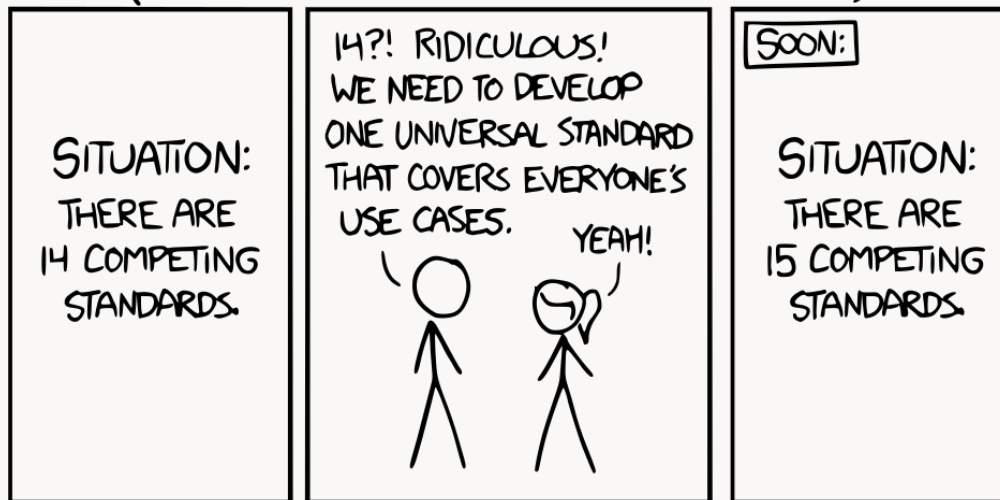
An international multi-stakeholder project to harmonise the ecosystem of epidemiology tools in R

- ✓ Make existing pieces interoperable
- ✓ Support existing tools to adopt global standards
- ✓ Develop a sustainable community



What we don't want

HOW STANDARDS PROLIFERATE:
(SEE: A/C CHARGERS, CHARACTER ENCODINGS, INSTANT MESSAGING, ETC.)



XKCD 927: Standards, by Randall Munroe, CC BY-NC

Our approach

- Involve the community
- Build upon existing infrastructure
- Co-creation with users & with other developers



Epiverse summit in Bogotá, Colombia, in June 2023

Successes



- Over 14k downloads
- 2 registered DPGs; 1 nominated

Challenges

- Research and academia are hyper-competitive spaces
- Communication is difficult in a network with many nodes
- How to build something sustainable even if funding isn't?

Conclusion

- Responding to the next crisis will require interoperable tools
- This can only be done through collaboration and multi-stakeholders projects
- Complex communities bring extra challenges
- What may appear as a technical challenge is even more of a communication and social challenge



Come talk to me about building bridges in the open-source ecosystem!